



MONTHLY MEMBERSHIP PROGRESS REPORT

District 22 A

Results as of: 04/30/2018

GMT: MAHESH CHITNIS

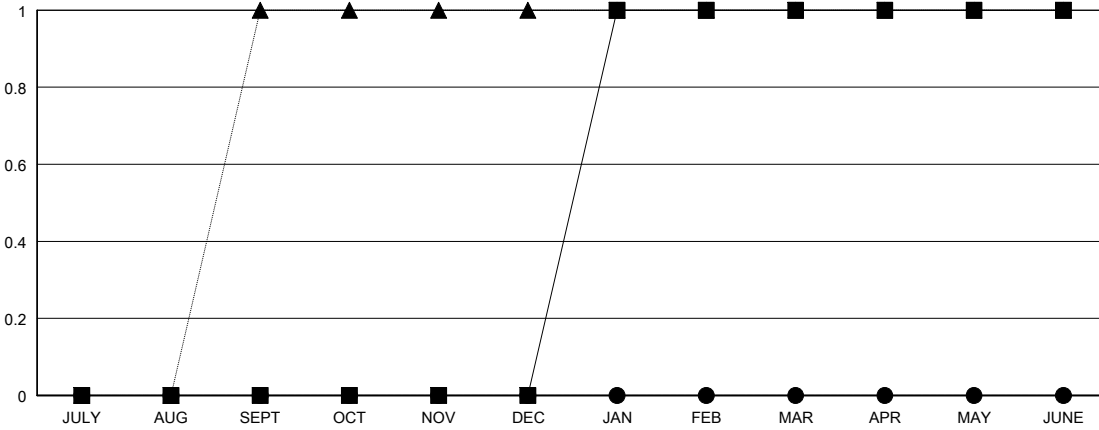
LOCATION MARYLAND

GMT CA

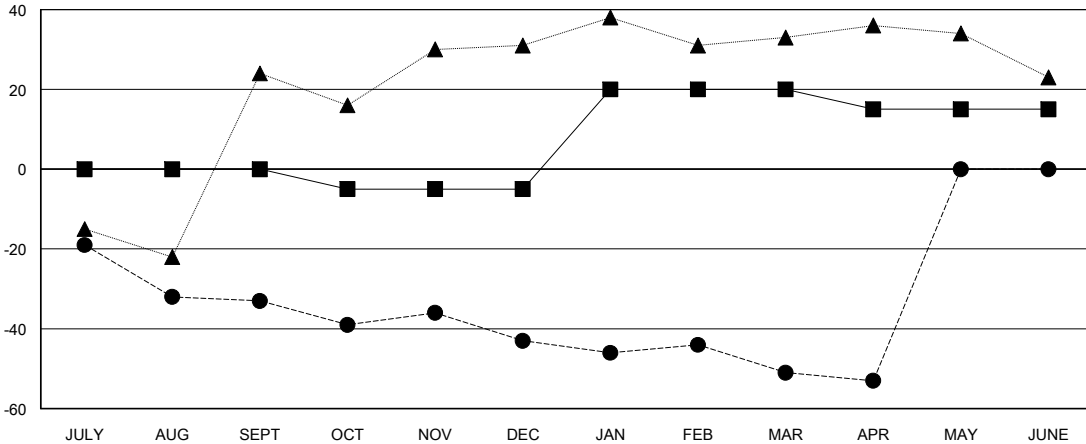
Clubs			
RESULTS FOR 2017-2018			
QUARTER	NEW CLUB GOAL	NEW CLUBS	DROPPED CLUBS
JULY/AUG/SEPT	0	0	1
OCT/NOV/DEC	0	0	0
JAN/FEB/MAR	1	0	1
APR/MAY/JUNE	0	0	0

Members			
RESULTS FOR 2017-2018			
QUARTER	MEMBER GROWTH NET GOAL	MEMBER GROWTH ACTUAL	DROPPED MEMBERS ACTUAL (including transfers)
JULY/AUG/SEPT	0	14	46
OCT/NOV/DEC	-5	26	32
JAN/FEB/MAR	25	6	14
APR/MAY/JUNE	-5	1	3

GOALS AND ACTUAL NEW CLUBS CUMULATIVE



GOALS AND ACTUAL MEMBERS CUMULATIVE



DROPPED CLUBS: 2	14 CLUBS OF 30 ADDED 1 OR MORE NEW MEMBERS	<u>GENDER DISTRIBUTION</u> MALE 525 (66.37%) FEMALE 266 (33.63%) Women Percentage Fiscal Year Goal: 38%
<u>DROPPED MEMBERS</u> DECEASED 13 CLUB CANCELLED 0 OTHER 82 TOTAL 95	CLICK HERE FOR CUMULATIVE MEMBERSHIP DATA	TOTAL FAMILY UNIT MEMBERS 137 FAMILY MEMBERS PAYING HALF DUES 71